

最任性的快鑽



C型快鑽

成本更省 效率不減

採流通性高的 **C型** 刀片

不綁刀片，
可使用各廠牌比較有特色的刀片。

整合刀片

減少刀片的使用種類，利於刀片管理。

使用 100° 角

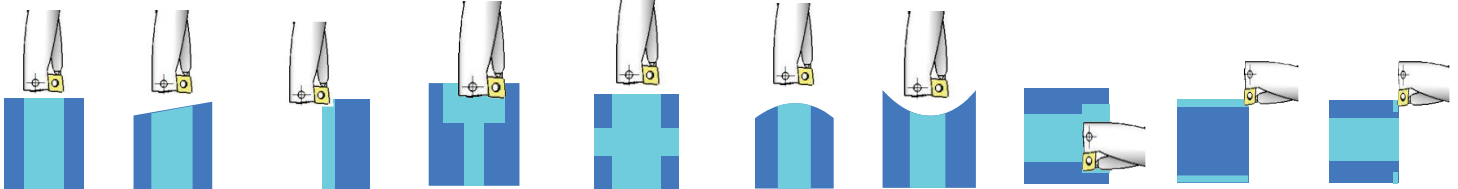
即第3、4角，可當快鑽內刃用。



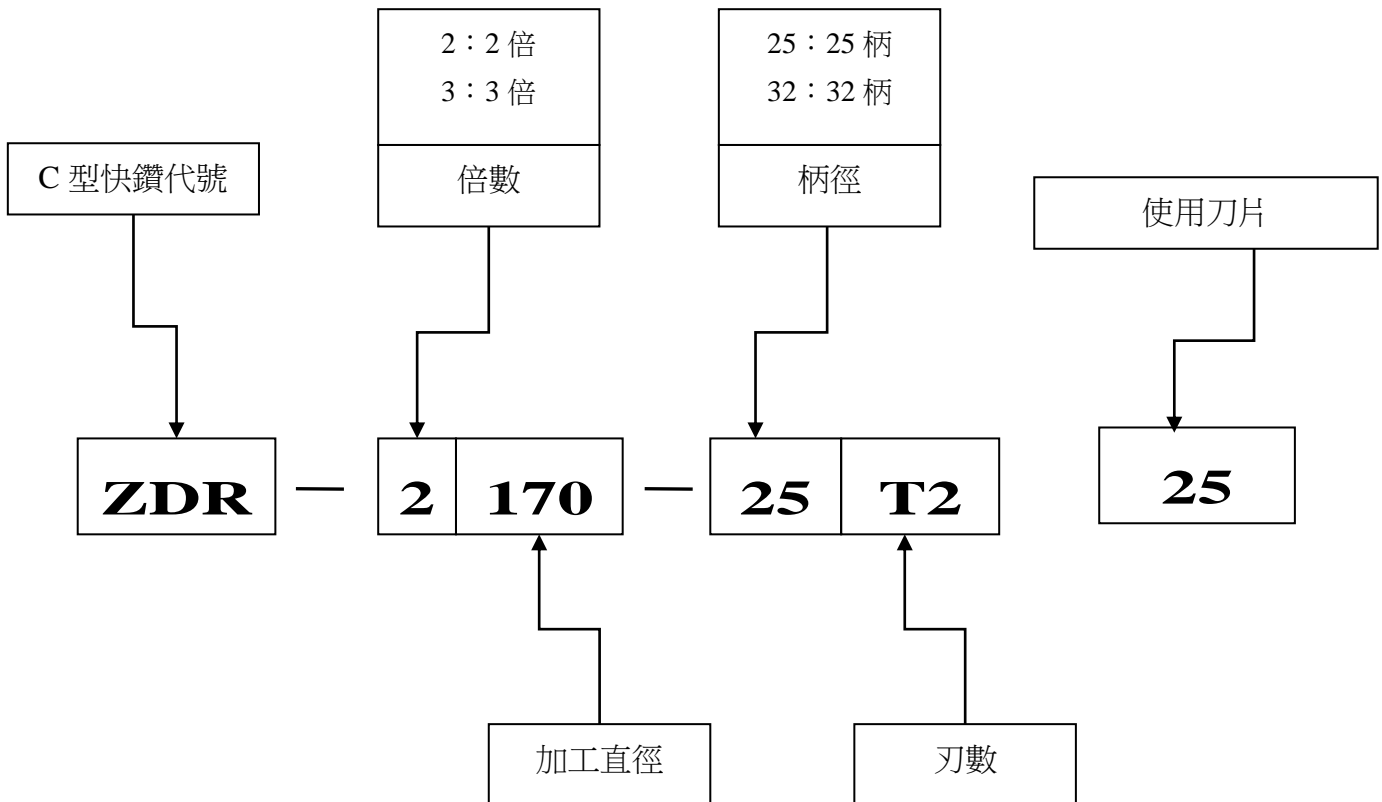
加工多樣化

特別強調! **可鑽! 可車! 可銑!**
複合式加工的能力。

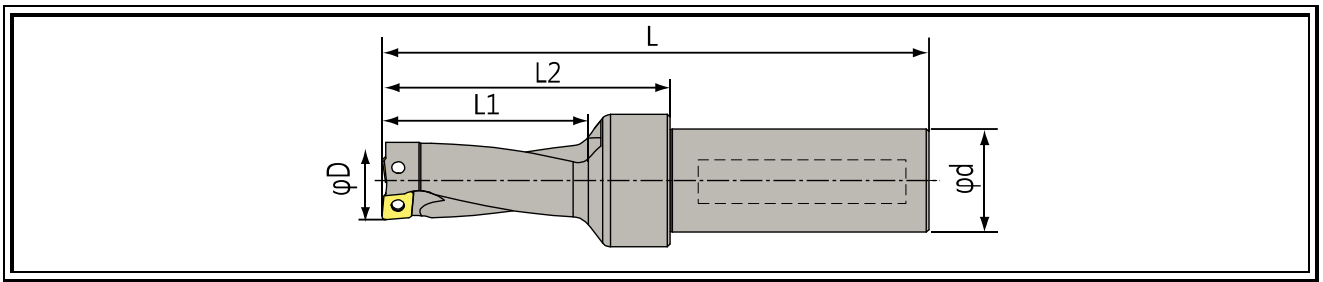
- 1.直孔 2.入口斜向鑽孔 3.半孔加工 4.魚眼加工 5.十字交叉孔加工 6.凸孔 7.凹孔 8.內徑加工 9.外徑加工 10.端面加工



C型快鑽表示方式

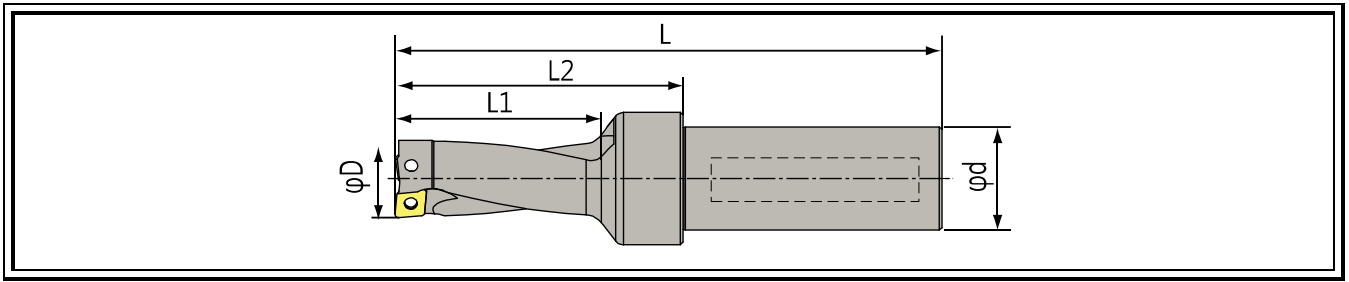


Zy C 型快鑽-2 倍 C Type Speed Drills



Stock	型號 Model No.	D	d	L	L1	L2	螺絲 Screw	Wrench	刀片 Insert
●	ZDR-2120-20T2-WD04	12	20	104	27	48	M1.8x4.0x2.5-54	T6	WD042004
●	ZDR-2130-20T2-WD04	13		106	29	50			
●	ZDR-2140-20T2-WD04	14		108	31	52			
●	ZDR-2120-25T2-WD04	12	25	104	27	48			
●	ZDR-2130-25T2-WD04	13		106	29	50			
●	ZDR-2140-25T2-WD04	14		108	31	52			
●	ZDR-2150-25T2-CP05	15	25	110	33	54	M2.2x5.1x3.1	T7	CP050204
●	ZDR-2160-25T2-CP05	16		112	35	56			
●	ZDR-2170-25T2-CP05	17		114	37	58			
●	ZDR-2170-25T2-CC06	17	25	114	37	58	M2.5x6.0x3.6	T8	CC060208
●	ZDR-2180-25T2-CC06	18		116	39	60			
●	ZDR-2190-25T2-CC06	19		118	41	62			
●	ZDR-2200-25T2-CC06	20		120	43	64			
●	ZDR-2210-25T2-CC06	21		122	45	66			
●	ZDR-2220-25T2-CP08	22	25	124	47	68	M3x7.8x4.1	T9	CP080208
●	ZDR-2230-25T2-CP08	23		126	49	70			
●	ZDR-2240-25T2-CP08	24		128	51	72			
●	ZDR-2250-25T2-CP08	25		130	53	74			
●	ZDR-2260-25T2-CP08	26		132	55	76			
●	ZDR-2270-32T2-CP08	27	32	134	57	78	M4x10.6x5.6	T15	CC09T308
●	ZDR-2280-32T2-CP08	28		136	59	80			
●	ZDR-2290-32T2-CC09	29	32	138	61	82	M4x10.6x5.6	T15	CC09T308
●	ZDR-2300-32T2-CC09	30		140	63	84			
●	ZDR-2310-32T2-CC09	31		142	65	86			
●	ZDR-2320-32T2-CC09	32		144	67	88			
●	ZDR-2330-32T2-CC09	33		146	69	90			
●	ZDR-2340-32T2-CC09	34		150	71	92			

Zy C型快鑽-3倍 C Type Speed Drills



Stock	型號 Model No.	D	d	L	L1	L2	螺絲 Screw	板手 Wrench	刀片 Insert
●	ZDR-3120-20T2-WD04	12	20	116	39	60	M1.8x4.0x2.5-54	T6	WD042004
●	ZDR-3130-20T2-WD04	13		119	42	63			
●	ZDR-3140-20T2-WD04	14		122	45	66			
●	ZDR-3120-25T2-WD04	12	25	116	39	60			
●	ZDR-3130-25T2-WD04	13		119	42	63			
●	ZDR-3140-25T2-WD04	14		122	45	66			
●	ZDR-3150-25T2-CP05	15	25	125	48	69	M2.2x5.1x3.1	T7	CP050204
●	ZDR-3160-25T2-CP05	16		128	51	72			
●	ZDR-3170-25T2-CP05	17		131	54	75			
●	ZDR-3170-25T2-CC06	17	25	131	54	75	M2.5x6.0x3.6	T8	CC060208
●	ZDR-3180-25T2-CC06	18		134	57	78			
●	ZDR-3190-25T2-CC06	19		137	60	81			
●	ZDR-3200-25T2-CC06	20		140	63	84			
●	ZDR-3210-25T2-CC06	21		143	66	87			
●	ZDR-3220-25T2-CP08	22	25	146	69	90	M3x7.8x4.1	T9	CP080208
●	ZDR-3230-25T2-CP08	23		149	72	93			
●	ZDR-3240-25T2-CP08	24		152	75	96			
●	ZDR-3250-25T2-CP08	25		155	78	99			
●	ZDR-3260-25T2-CP08	26		158	81	102			
●	ZDR-3270-32T2-CP08	27	32	161	84	105	M4x10.6x5.6	T15	CC09T308
●	ZDR-3280-32T2-CP08	28		164	87	108			
●	ZDR-3290-32T2-CC09	29	32	167	90	111			
●	ZDR-3300-32T2-CC09	30		170	93	114			
●	ZDR-3310-32T2-CC09	31		173	96	117			
●	ZDR-3320-32T2-CC09	32		176	99	120			
●	ZDR-3330-32T2-CC09	33		179	102	123			
●	ZDR-3340-32T2-CC09	34		182	105	126			